



Local Area Research + Intelligence Association

LARIA Newsletter November 2022

LARIA Updates

CALL FOR PRESENTATIONS

- DEADLINE: FRIDAY 13 JANUARY



In Partnership with



Rising Costs, Falling Revenues:

Exploring Research, Intelligence, and Insight from Local Areas

We currently face a wide range of significant challenges including the cost-of-living crisis, rising demands and costs associated with an ageing population, pressures on the NHS in a (hopefully) post-Covid-19 world, alongside the climate emergency. From 2010, local government across the UK saw their funding reduced by around 30% (although this figure varied significantly between regions and nations). The sector has a good record of stepping up to the plate in responding to public sector cuts and other challenges, but there is always room to learn from each other in making the best use of research and data. Now more than ever before, we need to share lessons on 'what works' in conducting research post-Covid and reacting to the cost-of-living crisis for councils, households, and vulnerable groups.

We are calling for presentations on our theme: Rising Costs, Falling Revenues: Exploring Research, Intelligence, and Insight from Local Areas.

For full details please see the [LARIA website](#) and to submit a presentation please download the [Submission Form](#) and return to admin@laria.org.uk.

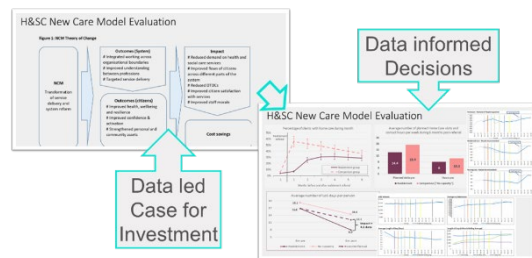
Paul Holme, Head of Performance, Research & Intelligence @ Manchester City Council

Hello all and welcome to this latest edition of the LARIA newsletter.

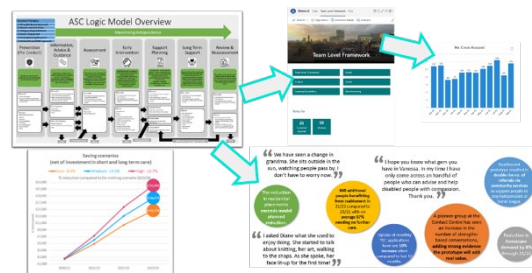
I'm one of the current LARIA council members but day-to-day I lead the Performance, Research and Intelligence function within Manchester City Council. Both roles are hugely fulfilling and blend dealing with relentless demand for insightful and evidence (I know you all feel it!), with a personal desire to make sure that evidence delivers a real impact on the decisions people make. So, I thought it might be useful to provide a short overview of why I think we [the analysis & research community] do the work we do.

I ran a workshop with my team managers last week and we talked about where our work could have the biggest impact and how we should spend our time next year. Below are a few illustrates of the types of areas we discussed.

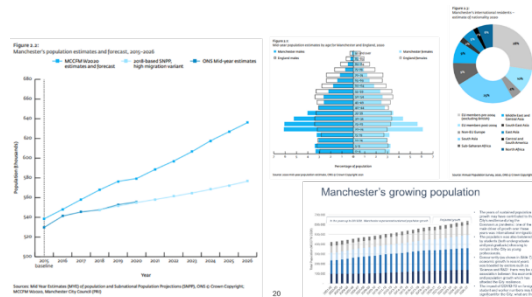
- **Understanding the difference that a programme, project, service or activity makes to our stakeholders** - through large scale evaluations and deep dive analytics.



- **Supporting performance management and transparency** - through coordination of statutory return and survey processes, implementation of Corporate and Directorate-level Performance Management Frameworks, and providing expertise to support inspections.



- **Informing future strategic and operational thinking** - through projections and modelling projects (inc advice on Cost Benefit Analysis) aligned to the priorities for the council and the city.



there are a few things in here that will illustrate that we're all wrestling with the similar issues across our roles and organisations, and this might kick start some discussions amongst us. I'm always happy to chat and explore new ideas, so reach out through LARIA if there is anything you'd like to discuss further.

Cheers,
Paul

News

LARIA Census huddle

We're a group of about a dozen Local Authorities who get together for an hour every month to talk about the Census. It's a good opportunity to share what we are doing and how. What we plan to do. We're a real mixture from different parts of England, some Districts, some Counties, some Unitaries and some working with a number of Local Authorities, but we're all about maximising the value and use of the Census. Are we doing the same as others? – that's good to know. Are we doing things differently? That's good to hear.

Our last get together was on 15th November. Running round the table were things like – the value of the ONS maps and pointing people to them (or using them ourselves). Analysis of data on veterans, looking at change from 2011, asking councillors about topics. Thinking about common issues: political boundaries which may be changing, whether definitions 2011 and 2021 are the same, and measuring deprivation.

If you are interested in meeting with the group, please contact Richard Potter at richard.potter@analyticscambridge.co.uk

GeoPlace

Barnsley Council - using UPRNs to build a Vulnerability Index

It can be a struggle to dedicate resources to back-office systems, but Barnsley Council has a specific

Business Intelligence (BI) Technical Team, which has enabled resources to be dedicated



to the 'engine room' of the council – its data and underlying systems. This team has a wide range of skills including IT, Analysis, Performance, Digital and GIS. When the team was first formed, some basic training courses were completed, but mostly the skills have been developed in house and on the job, using existing technology to help develop bespoke solutions at relatively low cost.

[This case study sets out the benefits](#) the council has seen from using data as a managed resources rather than siloed repositories, allowing the council to build a hyperlocal vulnerability index that can be utilised using criteria that can be changed, to a desired outcome.

Government guidance on using UPRNs and USRNs

Are you interested in utilising location information for your public sector project, but aren't quite sure where to start? [This blog post](#) sets out existing guidance from central and local government as well as some of the regulators.

The London Borough of Hounslow and the Energy Crisis: Developing Data Driven Insights to Inform Policy Response



Historic consumer price inflation, combined with stagnating wages and decreasing job security, is contributing to a cost-of-living crisis that is demanding the attention of public policy makers and service providers alike. Such is the forecasted scale and projected impact of the crisis that the Office for Budget Responsibility (OBR) has warned the next two years will see the “*biggest fall in household incomes in generations*” ([IFS, 2022](#)). It is not only those who are already experiencing some level of deprivation that are being squeezed, middle income earners too are reportedly scaling back significantly as the price of everyday essentials continues to rise ([ONS, 2022](#)). Of note is household energy: in the past year (from September 2021), gas prices have gone up by 96%, electricity by 54%. The government initially responded to this trend by introducing a two-year Energy Price Guarantee which capped average use bills at £2500/year; this has now been scaled back and is set to expire in April 2023 ([House of Commons Library, 2022](#)).

This shifting and uncertain landscape will likely result in further downward economic pressures for a significant proportion of residents, those tasked with alleviating some of these pressures (such as local councils) will need to do so in an enlightened and targeted manner. Guided by internally produced data rich insights, the London Borough of Hounslow is working to address this challenge: in regard to the energy crisis, the Council

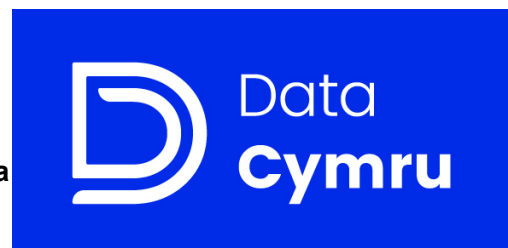
has responded with the 'warm spaces' initiative, along with wider winter planning including targeted vaccination campaigns, and cost of living marketplaces.

You can read the full report here: [The London Borough of Hounslow and the Energy Crisis: Developing Data Driven Insights to Inform Policy Response](#)

Author: Dr Simon Hayes, Information Analyst at the London Borough of Hounslow ([Hounslow Data Hub](#)).

Data Cymru

Interested in how to access social media data, the skills and jobs needed in the transition to a green economy, or how many personal assistants work in social care in Wales?



Data Cymru play a central role in ensuring that data and analysis is shared with decision-makers. They have produced reports for local authorities, the Welsh Local Government Association, Welsh Government, regional partners, and other key stakeholders.

Data Cymru work on a huge range of topics including, social care, transport, waste and the transition to a green economy.

Take a look at some of their work: [Reports](#). Keep an eye on their website as reports are published regularly.

Looking for Census data in one place?

Data Cymru are updating InfoBaseCymru with the latest Census data, as it is published by the Office for National Statistics. So far, data from the first release and the latest release which includes demography and migration data has been included. To help use and understand the data, Data Cymru have developed a suite of resources, including:

- a [dashboard](#) comparing 2001, 2011, and 2021 data;
- data (including Welsh metadata) on [InfoBaseCymru](#); and
- a [guide](#) to Census 2021.

For more information on census data please contact [Sam Sullivan](#).

Data-focused Communities of Practice (CoP)

Data Cymru have launched the first of their data-focused Communities of Practice (CoP).

These communities aim to enable positive, constructive information sharing across the Welsh public sector in relation to all things data.

The first of the CoPs, focus on:

- PowerBI; and
- Improving access to data.

The PowerBI CoP is aimed at individuals that work in the Welsh public sector and use PowerBI to create and share data visualisations, or are keen to do so. As a member of the community, you will be able to connect with other PowerBI users, share knowledge, ask questions and build skills.

Similarly, the Improving access to data CoP is aimed at individuals that work in the Welsh public sector and want to encourage and facilitate better access to data. As a member of this community, you will connect with like-minded colleagues to share, develop and promote good practice in relation to data access and sharing.

So, if you think you could benefit from being a part of these exciting new communities, please see their [CoP webpage](#) for details on how to get involved.

ONS Census 2021 topic summary publication updates



cyfrifiad
census
2021

The ONS has recently published the [demography & migration census topic summary](#) as well as the [UK Armed Forces veterans census topic summary](#).

There are also confirmed dates for the below topic summaries:

- 29 November: [ethnic group, national identity, language and religion](#)
- 6 December: [Welsh language](#)
- 8 December: [labour market and travel to work](#)

Statistical bulletins and datasets for each topic summary are available via the ONS website, along with an interactive [census maps tool](#) and a [Census 2021 dictionary](#) which provides detailed information about variables, definitions and classifications to help when using Census 2021 data. Datasets are also accessible via the [Nomis website](#).

Finally, the ONS has also announced provisional publication dates for remaining topic summaries on the links below:

- [Housing](#)
- [Sexual orientation and gender identity](#)
- [Education](#)
- [Health, disability and unpaid care](#)

ONS dynamic population model for local authority case studies in England and Wales: 2011 to 2022

On 23 November the ONS published an update to previously announced research on the dynamic population model (DPM) approach for producing population estimates.

The published research contains population estimates for 14 case study local authorities, which were chosen to enable testing of methods for a range of social and geographic features including areas with high student numbers, and coastal, rural, and metropolitan city areas. You can access the publication here: [Dynamic population model for local authority case studies in England and Wales: 2011 to 2022](#).

Early next year the ONS will publish an expansion of this research, producing DPM estimates for all local authorities in England and Wales, up to June 2022.

In an [accompanying blog](#), Jen Woolford, director of population statistics at the ONS, explains how research to transform the whole population statistics system is reaching new milestones.

Courses, Training Events and Webinars

**NIHR Health & Social Care Workforce
Research Unit**

NIHR | Policy Research Unit
in Health and Social
Care Workforce

The Home Care Research Forum provides an opportunity for researchers, people working in the field and others with an interest in homecare to gather and discuss current exciting research and to network with each other.

Our next event will be on **Wednesday 30th November**, from 2-4pm.

We have two talks scheduled, from talented researchers presenting their current work on:

A survey of single-handed care initiatives and double handed homecare reviews in English Adult Social Care

Dr Phillip Whitehead & Dr Leigh Rooney, University of Newcastle
Population Health Sciences Institute, Faculty of Medical Sciences

Human resource management in homecare: Managing people for safe care at the front-line of the pandemic

Thoai 'Lee' Le, University of Nottingham
Centre for Health Innovation, Leadership and Learning (CHILL), Nottingham University Business School

Please register to attend via Eventbrite: [Home Care Research Forum - 30th November 2022 Eventbrite](#)

The event is free to attend. Please do share details of the Forum with any contacts and relevant networks.

You will receive a Zoom link to join the Forum closer to the time of the event.

If you would like to join the Forum's mailing list to stay informed of upcoming events, please contact the Forum's Chair, Monica Leverton – monica.leverton@kcl.ac.uk.

The economic impact of closing the gaps in responses to homeless and self-neglect

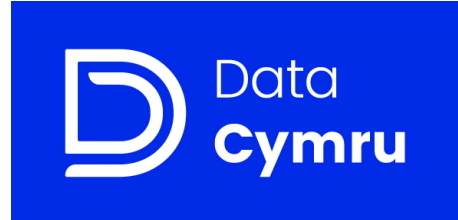
Monday 12 December 2022, 10 – 11am *online via Zoom*

An opportunity for policy and service leads, commissioners and practitioners to explore the economics of responses to homelessness and self-neglect.

As part of the [Opening the 'too difficult box': strengthening Adult Safeguarding responses to homelessness and self-neglect](#) study, the research team have built an approach to understand the financial costs, across health, social care and wider services, of the unmet needs of people experiencing homelessness and self-neglect. This offers a comparison with more effective service interventions and investment to improve responses to people's needs and support them to be safe. [Dr Michela Tinelli](#) from the London School of Economics and Political Science will present key results from the analysis of the economic data and [Jess Harris](#) from King's College London will outline emerging economic messages from the study's interviews with stakeholders.

Please register to attend via Eventbrite: [HSCWRU Homelessness Event Series, Mon, 12 December 2022](#)

Data Cymru - Inform and Inspire' webinar programme



Data Cymru host regular webinars as part of their capacity building programme of support. The next one is:

- Helping shape the future of Welsh sport: insights from the School Sport Survey – [Thursday 1 December – 12:00 – 13:00](#)

Take a look back at their past webinars here: [Data Cymru YouTube channel](#)

GeoPlace - Data linking, data protection and information governance to support vulnerable people

GeoPlace is working with UKAuthority to run two free webinars on data linking using UPRNs to target interventions on the people who need the most support.



This event will be of interest to officers, researchers and analysts who want to understand more about data sharing and information governance.

1. The first webinar is on **Friday 2nd December**: [UKA Live: Harnessing data to support vulnerable people](#). The one hour event will focus on how local authorities, health and other local public services can link and share data to identify people most in need of support
2. The second webinar takes place a week later on **9th December** and will focus on the data protection and information governance frameworks that help local services to identify and support the vulnerable in our communities: [UKA Live: Data, IG and supporting the vulnerable](#).

Find out more about the webinars in our blog '[Helping the vulnerable – how data gets the right support to the right people](#)'.

We are increasingly seeing UPRNs being used to bring datasets together to support a multi-agency approach in delivering public service challenges such as vulnerability, household support grants and energy efficiency grants.

Linking data in this way can also raise questions about information governance (IG), data protection and data sharing. The webinar on 9th December has the UK's top IG experts on hand to discuss and answer your questions:

- Dawn Monaghan, Interim Director of IG Policy, Ethics and Head of Profession, NHS England
- Dr Susheel Varma, Head of AI & Data Science, Information Commissioners Office
- Murat Soncul, Head of Privacy at Central Digital and Data Office, Cabinet Office- (tbc)

If you have any questions about data protection, data sharing and information governance, these events will be of interest.

UK Data Service

The UK Data Service offers a variety of free online events throughout the year. See below for a selection or visit [our events pages](#) for the full list..



Computational social science data drop-ins –

second Tuesday of the month [13 December 2022](#), 13.00 – 14.00

Join our monthly data drop-in to get or give some help on computational social science projects.

Data in the spotlight workshops

- **Data in the spotlight: Longitudinal data**
[1 December, 10.00am – 11.30am](#) This workshop will cover the key features of longitudinal surveys, an overview of the studies available via the UKDS, how to access the data and undertake exploratory online analysis.

- **Data in the spotlight: International time series databanks**
[6 December, 10.00am – 11.30am](#) This workshop will cover the international time series data held by the UKDS, the socio-economic topics covered, some key datasets, and how to access and download the data.
- **Data in the spotlight: Qualitative and mixed methods data**
[13 December, 10.00am – 11.30am](#) This introductory workshop is intended for anyone who wants to learn about the qualitative or mixed-methods data available from the UK Data Service.

Conferences

Crime Surveys User Conference 2022

[7 December 2022](#), 09.50 – 16.30

The user conference brings data producers and data users together to share updates on the development of the crime surveys and to showcase research that is being carried out using the data.

Labour Force and Annual Population Surveys User Conference 2023

[2 February 2023](#), 10.00 - 16:00

The user conference brings data producers and data users together to share updates on the development of the LFS and APS and to showcase research that is being carried out using the data.

ASSESS: SPSS (SPSS IBM Statistics) Users Group one-day SPSS online workshop delivered by Elizabeth Wiredu: An Introduction to IBM SPSS for complete beginners

Wednesday 29th March 2023

ASSESS is an independent user group for SPSS (IBM SPSS Statistics), a computer package for analysing and presenting data. It is run by users, for users and is completely independent of manufacturers of the software.

Since 1996 ASSESS have given a wide series of one and half-day workshops at venues around the country on many areas including SPSS syntax, SPSS macros, Survival analysis in SPSS and Analysis of categorical data in SPSS.

Two one day on-line workshops are provisionally planned to be held led by Elizabeth Wiredu (Elizabeth Training Limited). Workshop topics and other details including a booking form are available on the [ASSESS website](#). Further details will be sent out to delegates upon receipt of booking forms.

Each all-day workshop course introduces IBM SPSS Statistics to complete beginners. The aim of the course is to give delegates with little or no computational experience the confidence and skills to be able to use the software from scratch to prepare data ready for analysis and perform data manipulations using core commands to generate descriptive statistics, use data manipulations techniques and obtain graphical summaries.

Jobs

Cambridge Econometrics - 2 positions

Human Resources Manager

We are seeking a talented and enthusiastic HR generalist as maternity cover to join our Group

Shared Services team. In this role, you'll be responsible for the operational delivery of human resources across the Group, collaborating with senior managers and team leaders, and providing sound advice and guidance to employees and managers on HR policies, procedures and compliance.



Salary & Benefits

£50,000 (approximately)

Hybrid and flexible working; individual training budget; group personal pension; income protection; life assurance; bonus

For more information and to apply, see the [Job Advert](#)

Junior Economist (Student Placement)

We are seeking a Junior Economist to join us for a one-year placement. This opportunity is ideal for a student who will take a year out from their studies to join us.

Your placement at CE will be a great opportunity to see how economic thinking is applied to solve important challenges facing public policy. You'll work alongside talented professionals and gain practical skills for economic analysis, policy research and consultancy

We are looking for people who have:

- successfully completed 1-2 years of study at undergraduate level, in economics or another relevant discipline (preferably including modules in statistics, data analysis and/or econometrics) – typically, students apply during their second year with a view to carrying out the placement and then returning to university for their final year
- a proactive, resourceful and creative approach to problem-solving
- strong numeracy skills, with a good eye for detail
- experience of econometric software and/or a programming language would be advantageous (training in Python will be provided)
- a desire to make a difference in the policy areas that form Cambridge Econometrics' core business
- excellent communication skills in English
- a capacity for both team-working and for working autonomously
- strong time-management skills
- a keen and active interest to further develop your skills

Salary & benefits

£21, 500

Hybrid and flexible working; individual training budget; income protection; life assurance

For more information and to apply, see the [Job Advert](#)

London Borough of Hounslow - Information Analyst

Organisation: London Borough of Hounslow

Job Title: Information Analyst

Job Location: Hounslow

Salary: £36,138 - £40,614

Contract Type: Fixed-term (approx. 18 months)

Work Location: Hounslow / hybrid

Hours: 36



About The Role

The Council's Insight and Intelligence team may be part of our Policy, Performance, and Strategy function in the Assistant Chief Executive's Directorate but its reach extends across the Council and beyond. We turn data into insight and help the Council and its partners serve our residents well.

At the heart of this is a multi-year insight and analytics programme. Information Analysts do something that really matters – helping LB Hounslow better understand the world in which we operate and supporting commissioners and decision makers with an evidence base that will help them to do the right thing.

If you like what you've read and would like to be part of the team get in touch.

Key Responsibilities:

1. Work effectively across the Council, producing accurate information and data analysis for Project Managers and other colleagues which improves our understanding of the borough, the residents we serve, and the evidence we use to make decisions
2. Undertake public policy research and analysis using both qualitative and quantitative research techniques
3. Manipulate multiple inter-linked data sets from the across the Council and elsewhere to produce statistical analysis and interpretation
4. Turn data into high-quality written, oral, and visual (infographic) material.

For more information and to apply, Search for Analyst - [Jobs, careers and adult learning | London Borough of Hounslow](#)

To submit a job advert to appear in the newsletter or on the LARIA website, please download and complete this [form](#) (Full Corporate and Corporate Members only). You can also post Job Vacancies on the Jobs Board in the LARIA [Members' Area](#).

The next newsletter submission deadline is [Thursday 15th December](#).

Are you a Corporate or Full Corporate Member?



Your LARIA Corporate Membership entitles you to submit content to the monthly LARIA newsletter, if you have any research, events, job adverts, resources or news which you would us to include please send it to admin@laria.org.uk.

The next newsletter submission deadline is [Thursday 15th December](#).

Copyright © 2022 LARIA, All rights reserved.

You are receiving this email because you opted in via our website.

Our mailing address is:

LARIA

LARIA

Tower House

Mill Lane, Askham Bryan

York, North Yorkshire YO23 3FS

United Kingdom

[Add us to your address book](#)

Tel - 0345 676 9598

Email - admin@laria.org.uk

Web - www.laria.org.uk

Twitter - [@laria](https://twitter.com/laria)

Want to change how you receive these emails?

You can [update your preferences](#) or [unsubscribe from this list](#).



